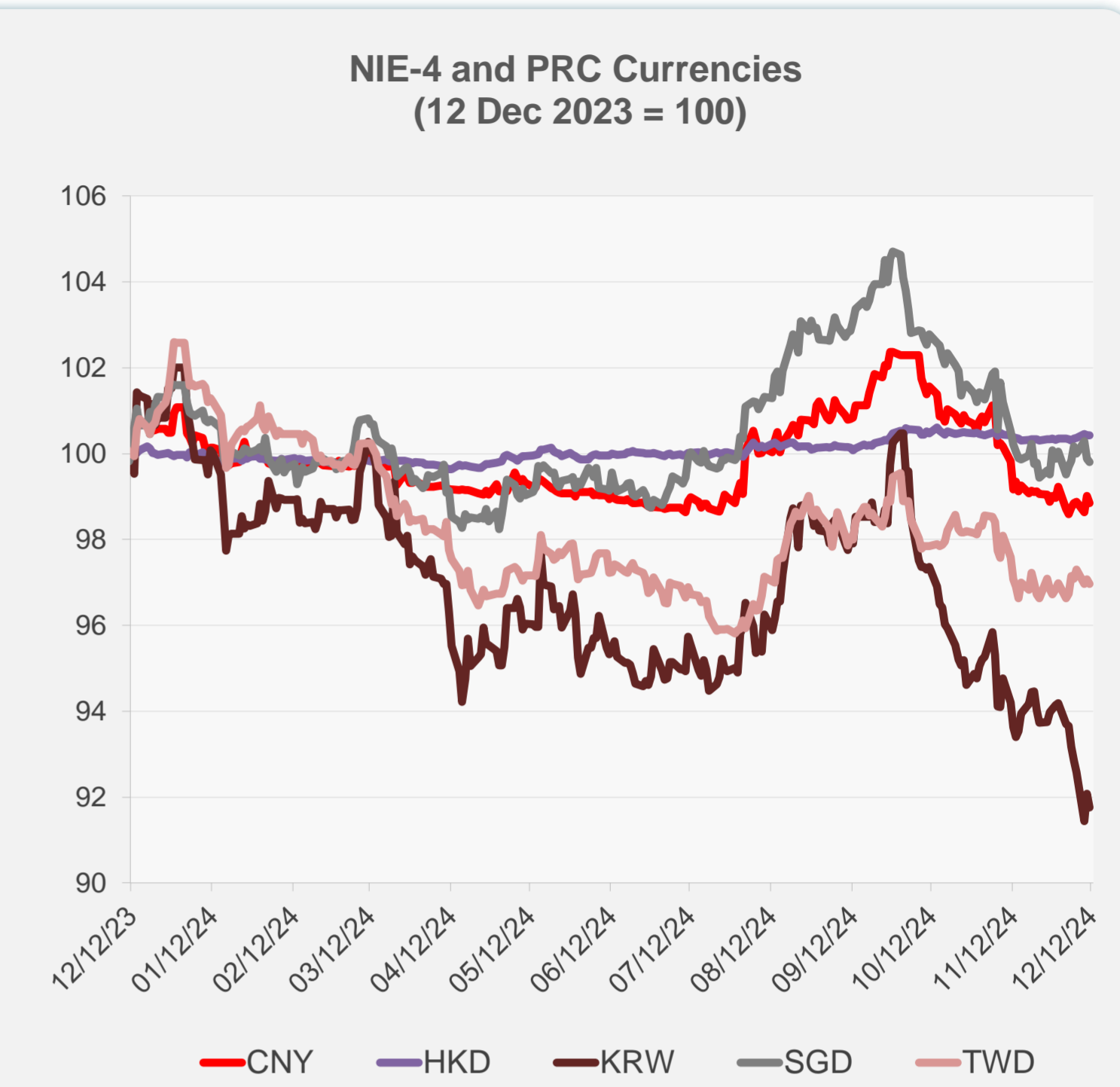
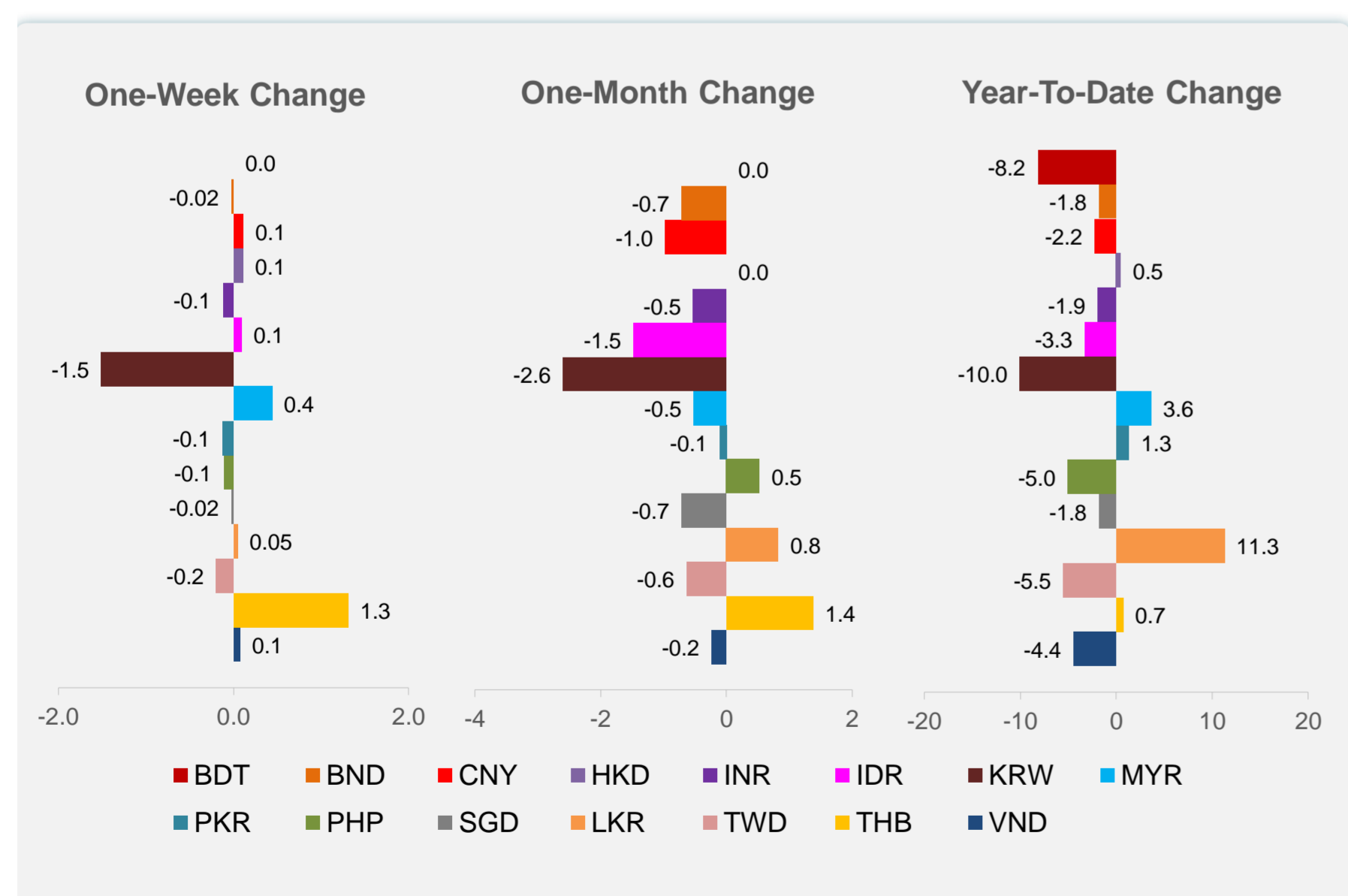
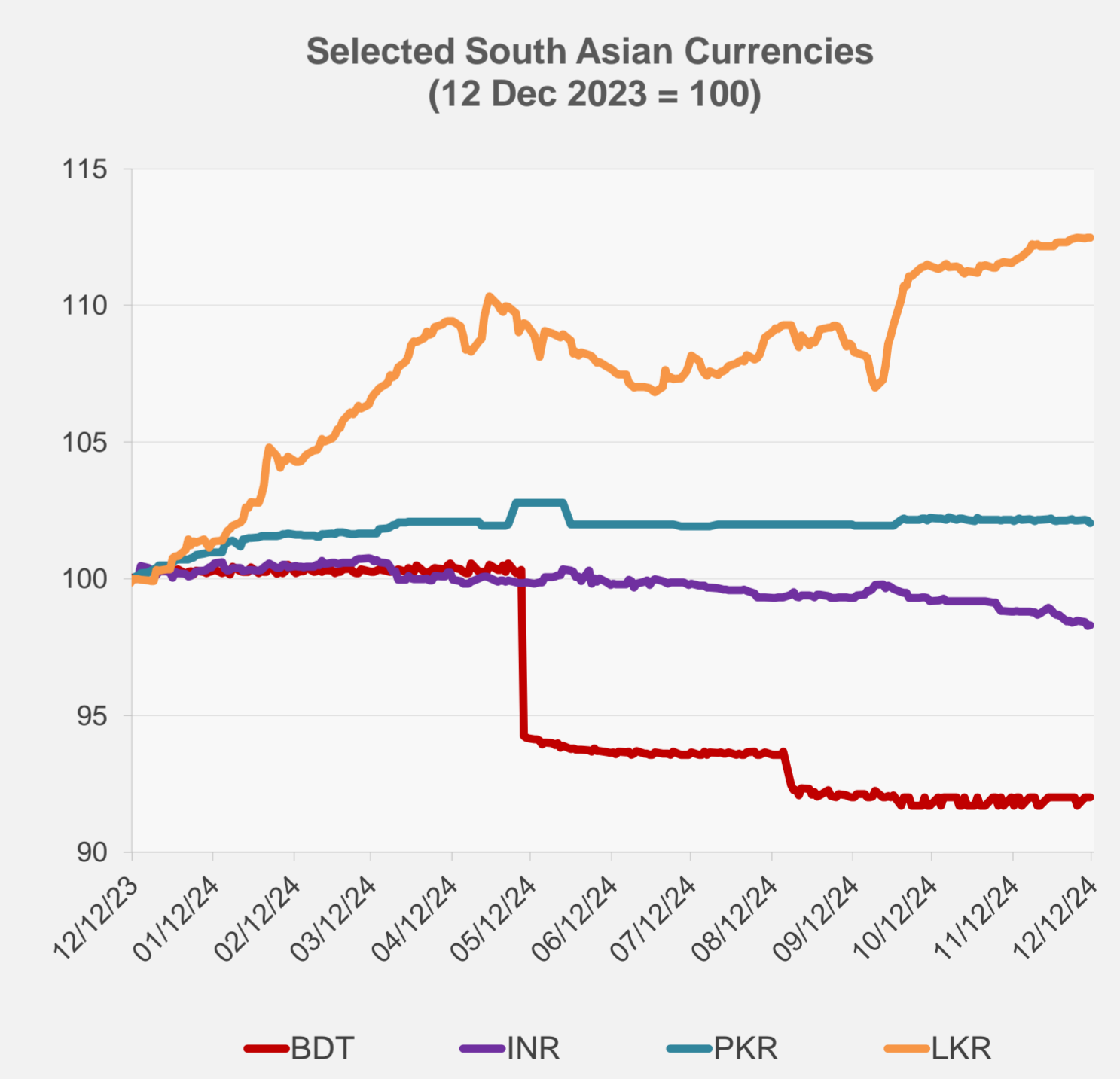
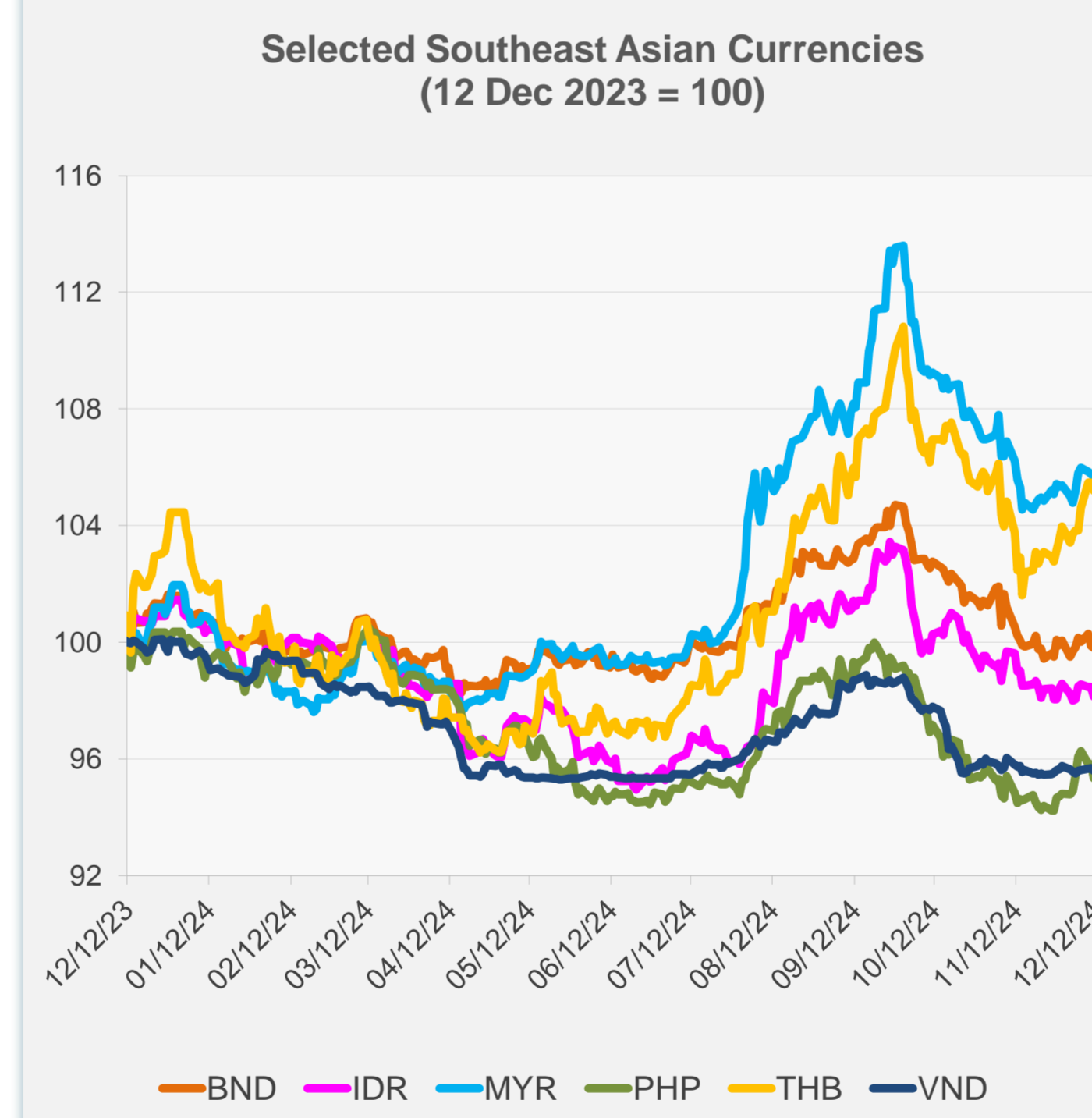


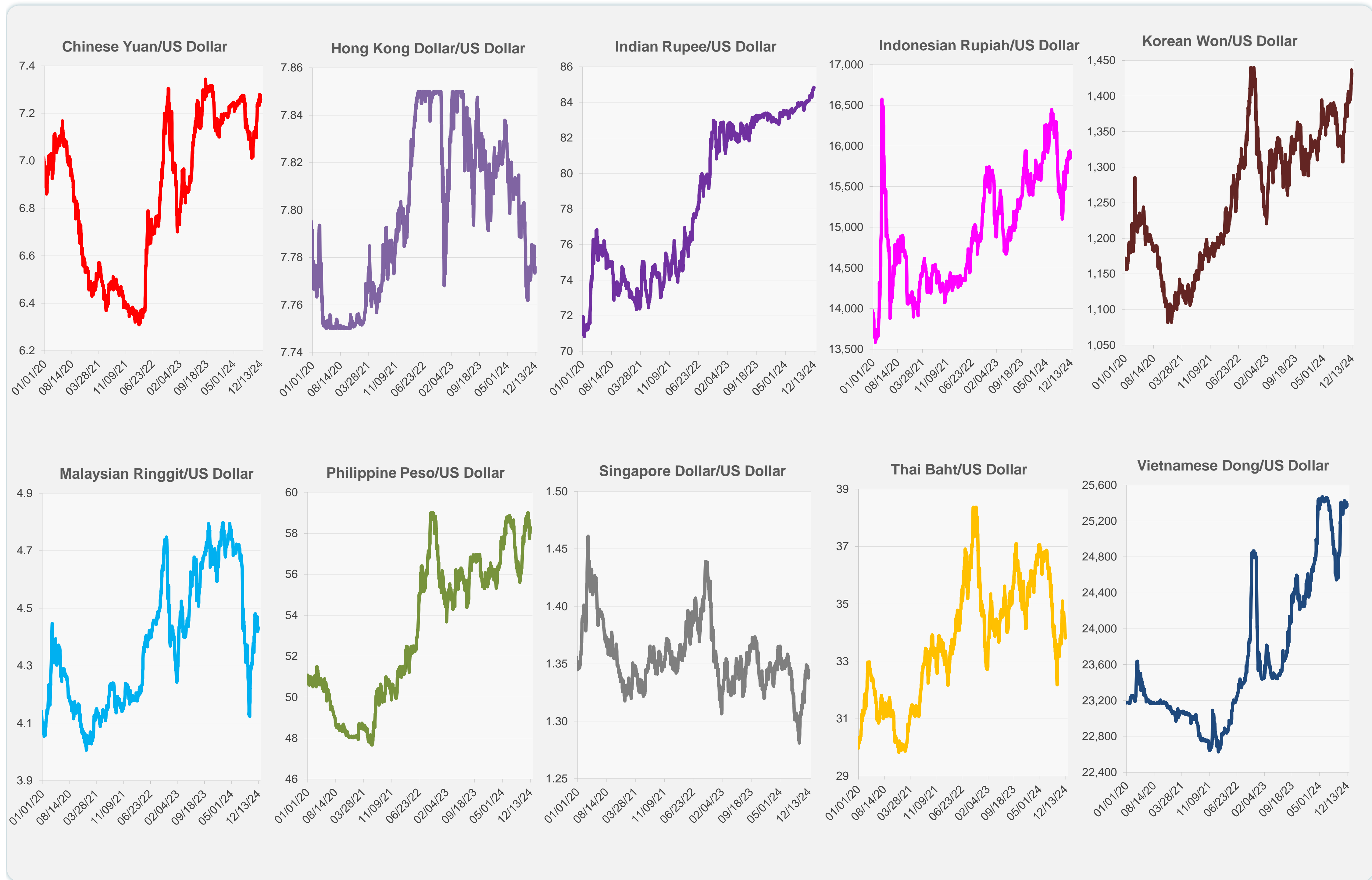
	Latest Closing	% change from Previous Day	% change from 01-Jan-24
Euro	0.95	-0.14	-5.03
Japanese yen (JPY)	152.48	-0.23	-7.60
Bangladeshi taka (BDT)	119.50	0.00	-8.16
Brunei dollar (BND)	1.34	-0.07	-1.76
Chinese yuan (CNY)	7.26	-0.16	-2.21
Hong Kong dollar (HKD)	7.78	-0.01	0.46
Indian rupee (INR)	84.84	0.01	-1.89
Indonesian rupiah (IDR)	15,915.00	-0.31	-3.25
Korean won (KRW)	1,431.90	-0.34	-10.04
Malaysian ringgit (MYR)	4.43	-0.11	3.63
Pakistan rupee (PKR)	278.15	-0.08	1.33
Philippine peso (PHP)	58.31	-0.52	-5.01
Singapore dollar (SGD)	1.34	-0.07	-1.76
Sri Lanka rupee (LKR)	290.20	-0.01	11.29
Taipei,China NT dollar (TWD)	32.49	-0.11	-5.48
Thai baht (THB)	33.90	-0.27	0.71
Vietnamese dong (VND)	25,390.00	-0.11	-4.42



NIE = Newly Industrialized Economies



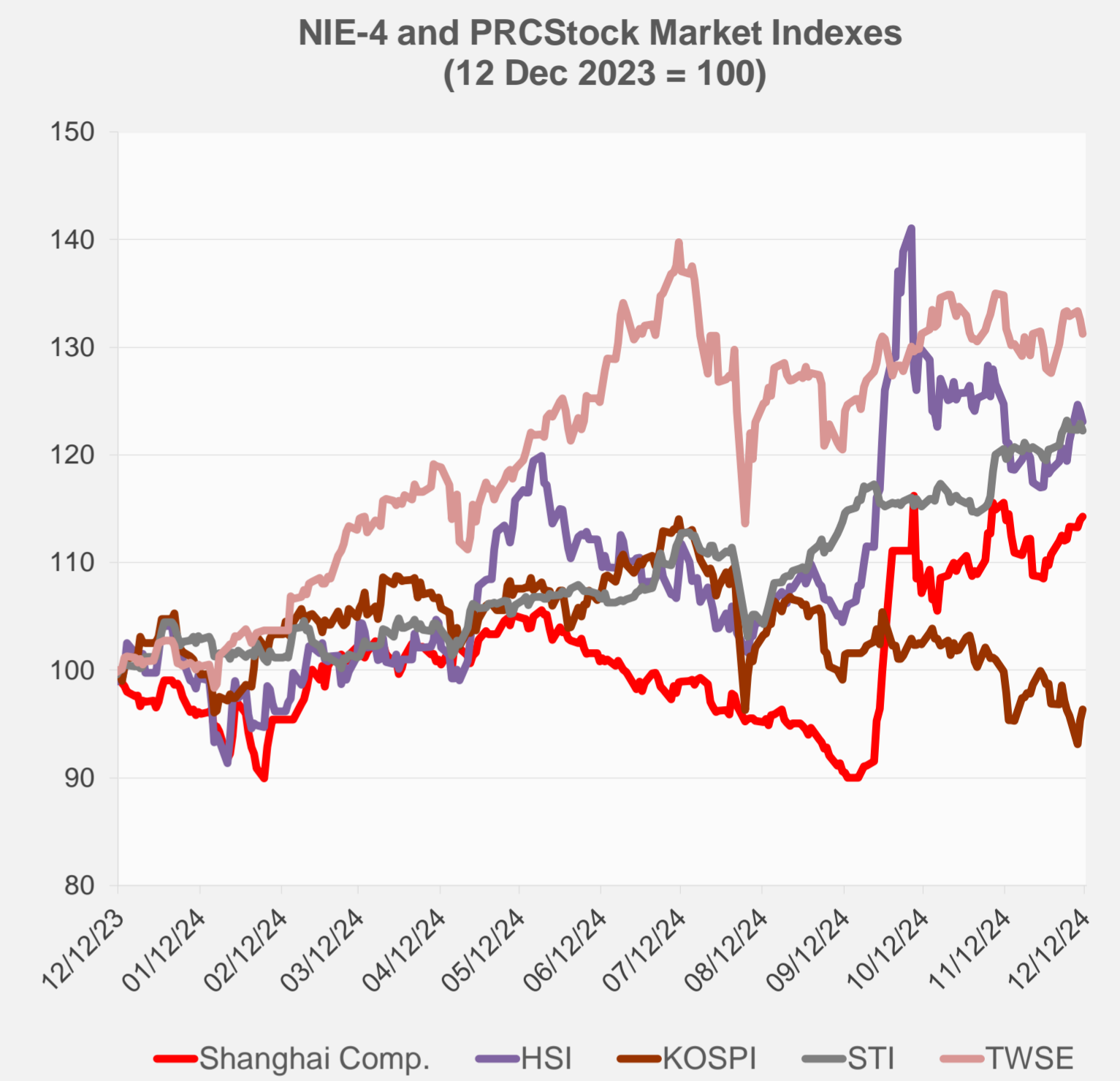
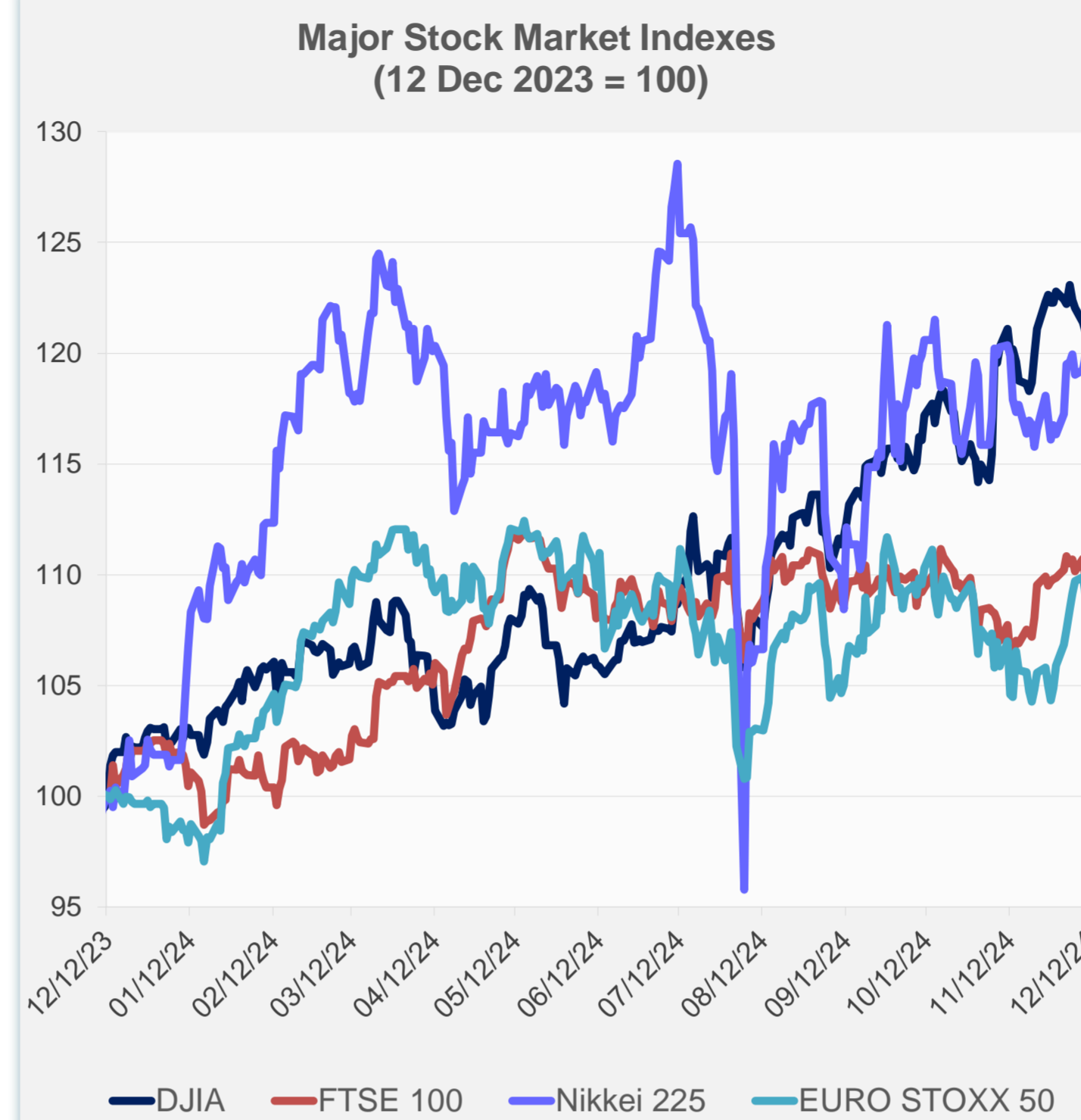
Note: Negative/Decreasing values indicate depreciation of local currency, and positive/increasing values indicate appreciation.
Source: ADB calculations using data from Haver Analytics.



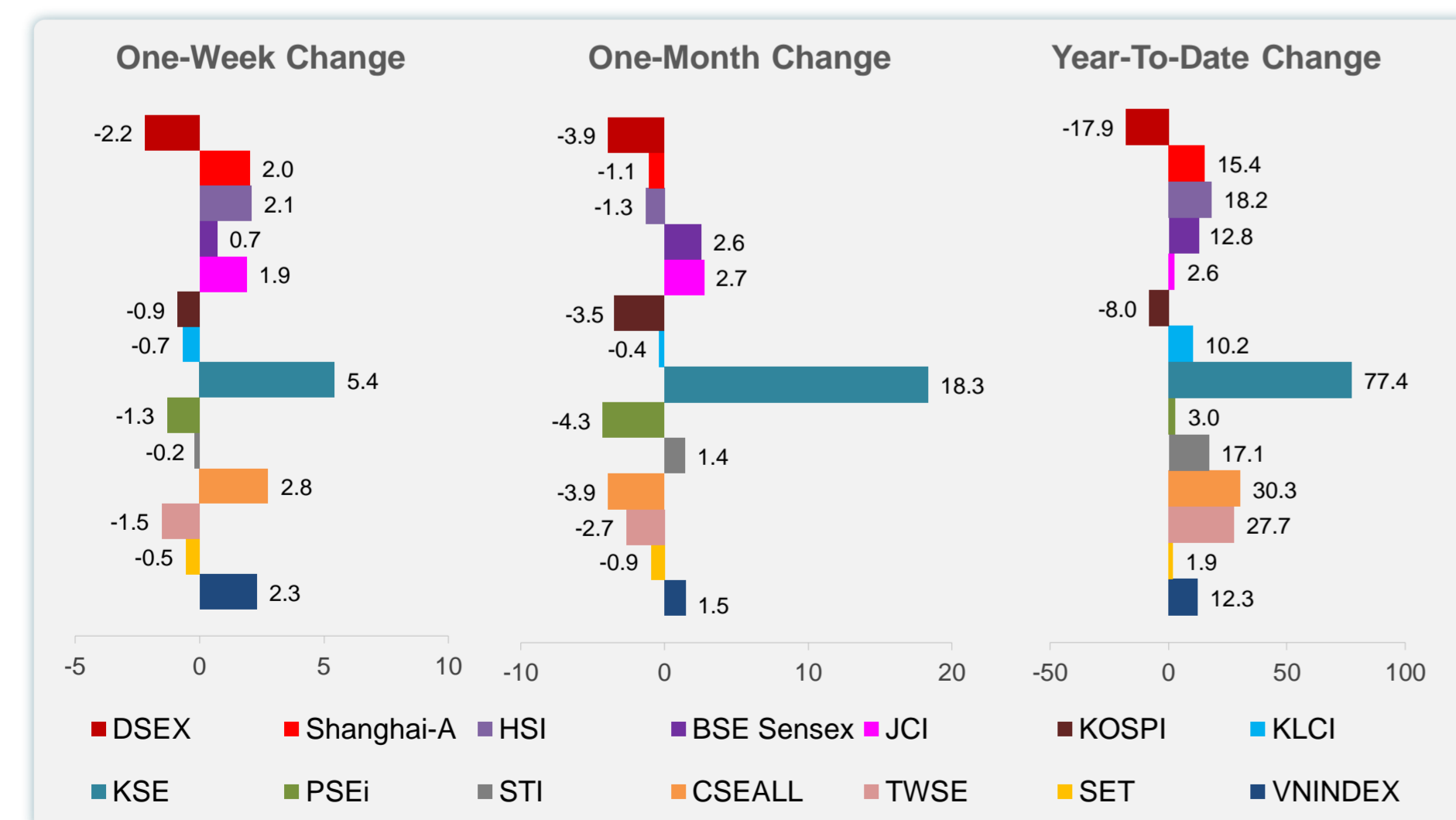
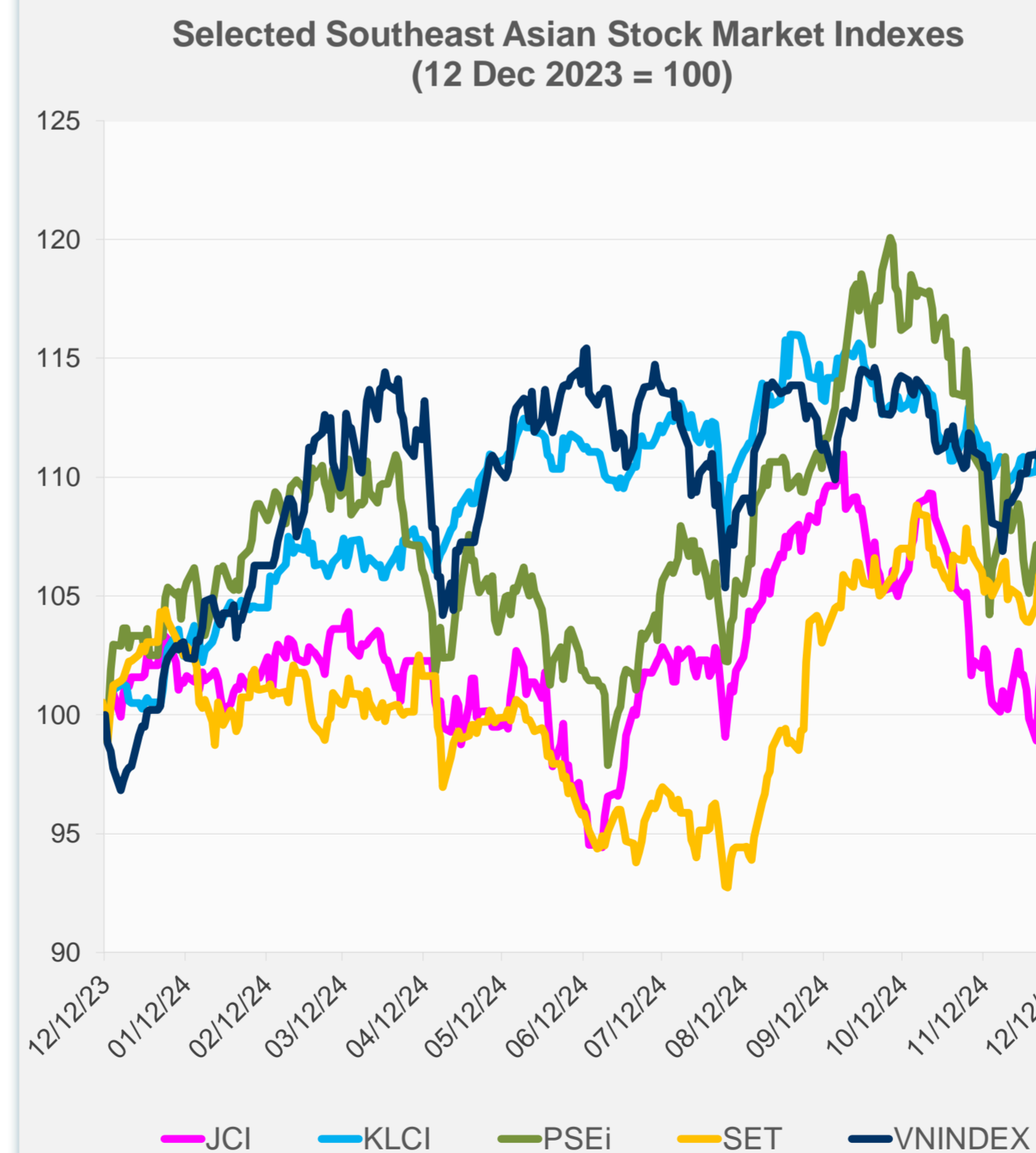
Source: Haver Analytics.

Daily Market Watch
STOCK INDEXES

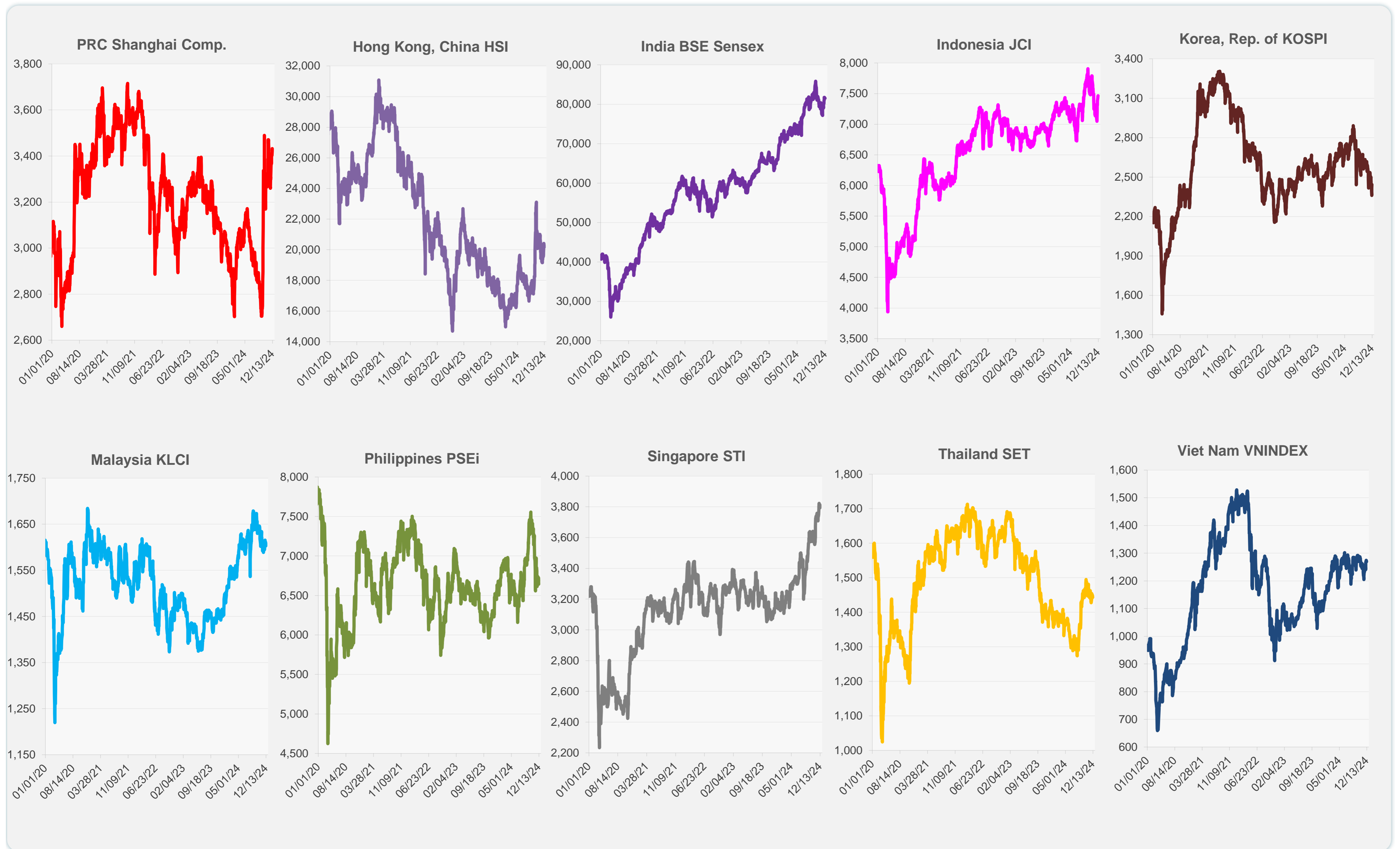
	Latest Closing	% change from Previous Day	% change from 01-Jan-24
US Dow Jones Ind Avg	44,148.56	-0.22	17.14
US NASDAQ	20,034.90	1.77	33.47
US S&P 500	6,084.19	0.82	27.56
UK FTSE 100	8,301.62	0.26	7.35
EURO STOXX 50	4,959.35	0.15	9.69
Japan NIKKEI 225	39,372.23	0.01	17.65
Bangladesh DSEX	5,124.50	-0.82	-17.91
PRC Shanghai Comp.	3,432.49	0.29	15.38
Hong Kong, China HSI	20,155.05	-0.77	18.23
India BSE Sensex	81,526.14	0.02	12.80
Indonesia JCI	7,464.75	0.15	2.64
Korea, Rep. of KOSPI	2,442.51	1.02	-8.01
Malaysia KLCI	1,603.20	-0.36	10.21
Pakistan KSE 100	110,810.21	1.76	77.44
Philippines PSEi	6,642.71	-1.22	2.99
Singapore STI	3,792.82	-0.54	17.05
Sri Lanka CSEALL	13,885.09	0.80	30.33
Taipei, China TWSE	22,903.63	-0.96	27.73
Thailand SET	1,443.05	-0.31	1.92
Viet Nam VNINDEX	1,268.86	-0.25	12.30



NIE = Newly Industrialized Economies



Sources: ADB calculations using data from CEIC Data Company and Haver Analytics.



Sources: CEIC Data Company and Haver Analytics.

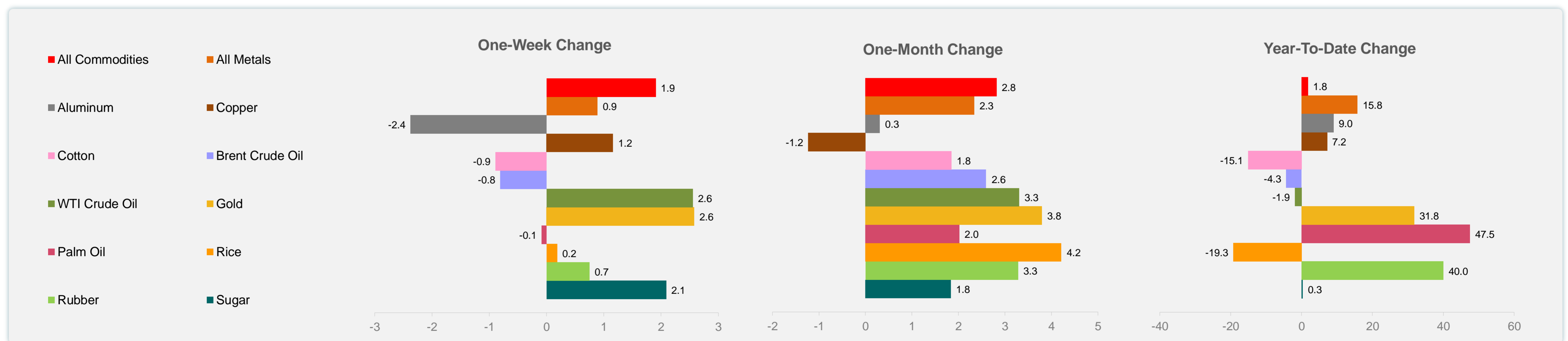
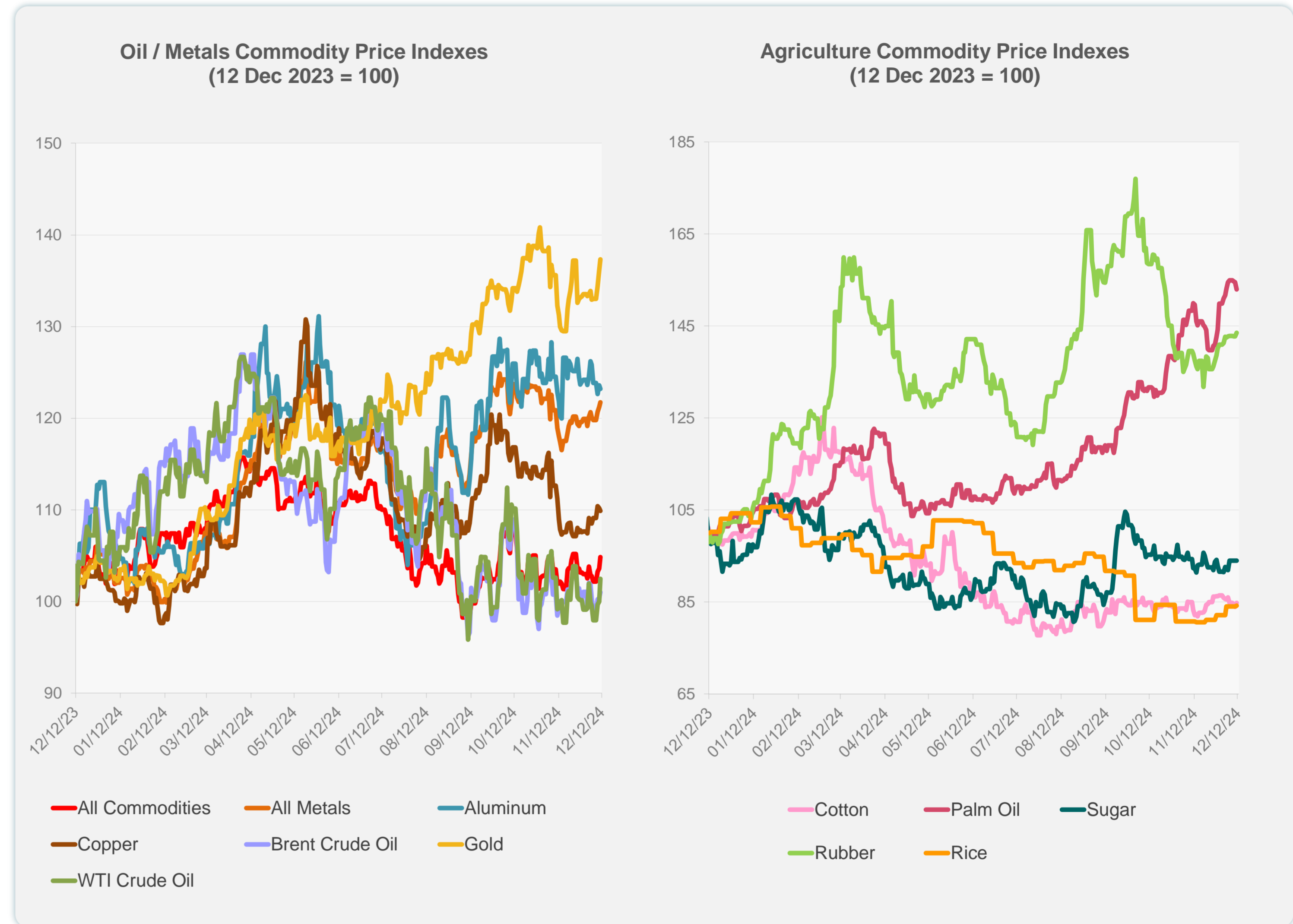
Daily Market Watch
COMMODITY PRICES

12 December 2024, 9:00 AM Manila

	Unit	Latest Closing	% change from Previous Day	% change from 01-Jan-24
S&P All Commodities	US\$	545.36	1.21	1.81
S&P All Metals	US\$	321.17	0.42	15.77
Aluminum	US\$/metric ton	2,556.93	-0.29	9.01
Copper	US\$/metric ton	9,074.07	-0.30	7.21
Cotton	US cents/lb	66.65	1.02	-15.10
Brent Crude Oil	US\$/barrel	74.25	0.64	-4.32
WTI Crude Oil	US\$/barrel	70.29	2.48	-1.90
Gold	US\$/troy oz	2,718.23	0.89	31.76
Palm Oil	US\$/metric tonne	1,192.98	-1.00	47.47
Rice ¹	US\$/metric ton	544.00	0.18	-19.29
Rubber ²	US\$/kg	242.30	0.54	39.98
Sugar	US cents/lb	20.54	0.00	0.34

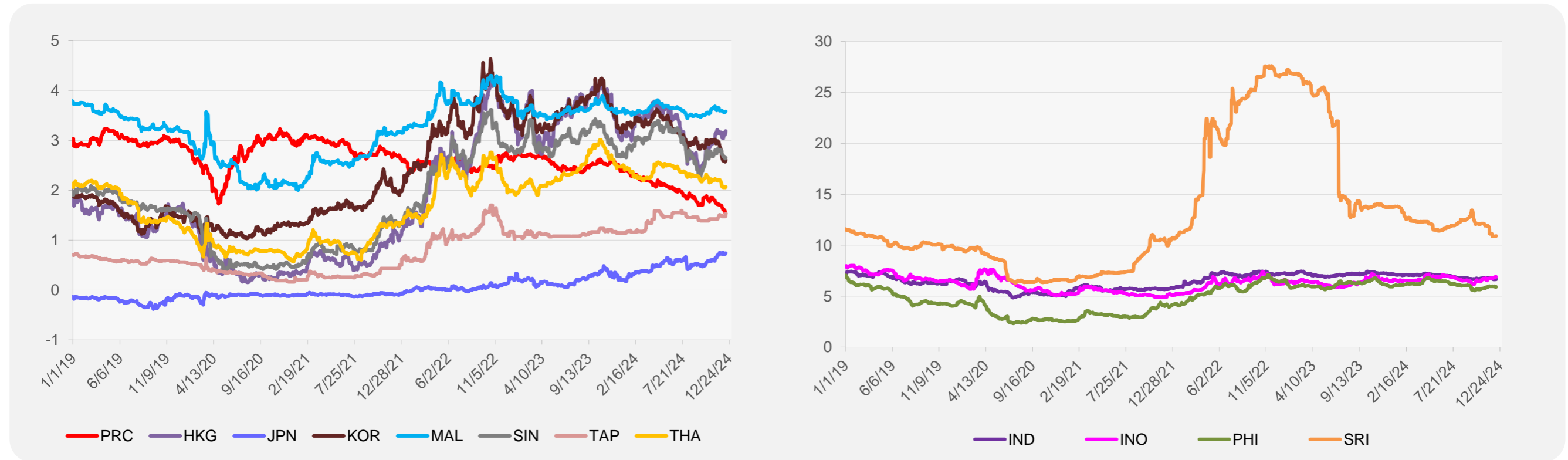
¹ Latest closing price from 12 December 2024.

² Singapore Exchange, Ribbed Smoked Sheet Rubber.

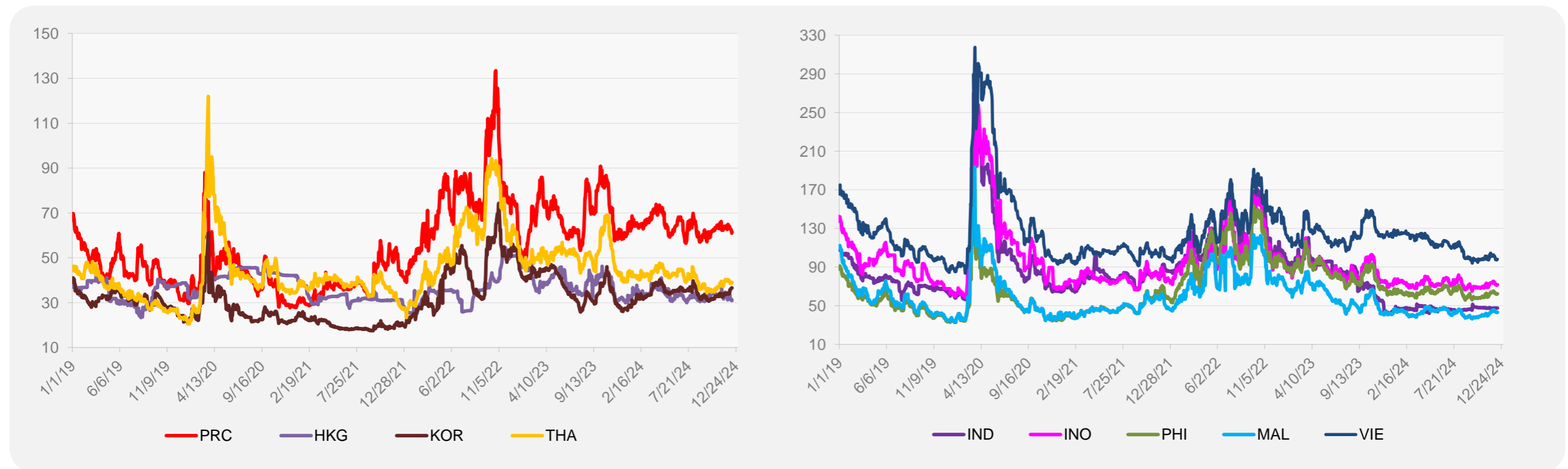


Source: ADB calculations using data from Bloomberg.

5-YEAR LOCAL CURRENCY GOVERNMENT BOND YIELDS (%)



5-YEAR CREDIT DEFAULT SWAP¹



¹ In USD and based on sovereign bonds.
Source: ADB calculations using data from Bloomberg.